

**HÔTEL**  
**LOCARNO**  
ROMA



## The Grande Dame of Boutique Hotels

Opened in 1925, Hotel Locarno is Rome's most storied hotel, a literary legend, and a rare city hideaway. Historic estate cum high-end boutique hotel, it has an unbreakable bond with the world of art and culture.

Named by the Financial Times as 'one of the top 25 destinations for the perfect drink', Hotel Locarno is a sophisticated retreat within walking distance of Piazza del Popolo, and an alluring hub known for regularly welcoming celebrities, artists, film-makers, and all unforgettable voyagers.

Housed in early 20th-century twin buildings, the interiors were carefully restored and reimagined in a retro-classic style, combining Art Deco furniture and fixtures with a dash of urban hipness.





Within the gate and courtyard walls laden with wisteria, the operatic secret garden, fringed with kentia palm trees, connects the two buildings of the estate, orchestrating a seamless osmosis of Rome's best outdoor 'salotto' with the ravishing Art Nouveau interiors.

It is pure seduction for the eyes and equally intoxicating to sit on the rooftop terrace with a Roma-Bracciano, the iconic flagship cocktail, gazing at Piazza del Popolo's flamboyant domes, in the languid Roman golden hours.

The stories of the maestros who have walked these halls and those who continue to grace us, are preciously and discretely kept, yet contribute to a timeless ambiance irreverent of convention. With a hyper-efficient and utterly charming staff, Hotel Locarno provides an indulgent urban setting for both reverie and quiet inspiration.





## Rooms & Suites

- 2 Double Ground Floor

---

- 4 Classic

---

- 10 Superior

---

- 5 Deluxe Corner

---

- 10 Deluxe

---

- 10 Junior Suite

---

- 2 Premium Corner with balcony

---

- 3 Prestige Deluxe

---

- 3 Suites

---

- 49 Total**

- 6 pairs of adjoining rooms

---

- 2 accessible rooms  
(Double Ground Floor 108 & 109)

All queen beds - possibility of twin beds in most of the rooms

### Property GDS Codes

Sabre YX 86584 - Amadeus YX ROMHLC -  
Apollo/Galileo YX 18336 - Worldspan YX 10614  
- Pegasus GL 25659



Suite Bellevie

# Room Inventory

	GDS CODE	UNIT	VIEW	ACCESSIBLE	BALCONY	BATH TUB	SHOWER	ADD INFO	ROOM NUMBER	CONNECTING	FLOOR	FLOOR ADD	SQM	SQF	DOUBLE SINK	MAX OCC	TWIN BEDS
Double Ground Floor	GDB	2	City View	X			X		108 - 109		GF	Parquet	30	323		2 + cot	
Classic	CLAS	4	City View			X		Clowfoot tub	104	103 Deluxe		Parquet	23	237		2 + cot	X
Superior	SUP	10	City View / Courtyard			X		Classic tub				Parquet	26	280	X	2 + cot	X
Deluxe Corner	DLX	5					X					Parquet	29	312	X	2 + cot	
Deluxe	DBLDLX	10	City View	X			X		103	Classic 104		Parquet / Marble	30	323		2 + cot	X
Premium Corner with balcony	TPC															3 + cot	
803	TPC	1	City View		X	X			803	802	3	Marble	38.3	430		3 + cot	X
805	TPC	1	City View		X	X			805		3	Marble	43.2	430		3 + cot	X
Junior Suite Room 01	SSUI2	5	Courtyard			X	X						36	387		3 + cot	X
Junior Suite Room 07	SSUI2	5	City View				X						36	387		3 + cot	X
Prestige Deluxe Doge	PDD	1	City View			X	X	Historical Suite	602	603	1	Parquet	50	539	X	2 + cot	
Prestige Deluxe Matilde di Canossa with balcony	PDMC	1	City View		X	X		Historical Suite	605	606	1	Parquet	37	399		2 + cot	
Prestige Deluxe degli Artisti	PDA	1	City View			X	X	Romantic Suite	705	706	2	Parquet	41	442	X	2 + cot	X
Suite Venezia with balcony	SBV	1	Courtyard		X	X		Two-Bedroom	603	602	1	Marble	55	596		2 + cot	X
Suite Bellevie	SB	1	City View / Courtyard			X	X	Two-Bedroom	702	703	2	Parquet	62	671	X	2 + cot	X
Suite Serenissima	SR	1	City View / Courtyard			X	X	Two-Bedroom	703	702	2	Parquet	55	596		2 + cot	X

# Adjoining Rooms

	GDS CODE	UNIT	VIEW	ACCESSIBLE	BALCONY	BATH TUB	SHOWER	ADD INFO	ROOM NUMBER	CONNECTING	FLOOR	FLOOR ADD	SQM	SQF	DOUBLE SINK	MAX OCC	TWIN BEDS
Classic	CLAS	1	City View			X		Clowfoot tub	104	103 Deluxe		Parquet	23	237		2 + cot	X
Deluxe	DBLDLX	1	City View	X			X		103	Classic 104		Parquet / Marble	30	323		2 + cot	X
Premium Corner with balcony		1	City View		X	X			803	802	3	Marble	38.3	430		3 + cot	X
Prestige Deluxe Matilde di Canossa with balcony	PDMC	1	City View		X	X		Historical Suite	605	606	1	Parquet	37	399		2 + cot	
Prestige Deluxe degli Artisti	PDA	1	City View			X	X	Romantic Suite	705	706	2	Parquet	41	442		2 + cot	X
Prestige Deluxe Doge	PDD	1	Courtyard			X	X	Historical Suite	602	603	1	Parquet	50	539	X	2 + cot	
Suite Venezia with balcony	SBV	1	Courtyard		X	X		One bedroom + one living room	603	602	1	Marble	55	596		2 + cot	X
Suite Bellevie	SB	1	City View / Courtyard			X	X	One bedroom + one living room	702	703	2	Parquet	62	671	X	2 + cot	X
Suite Serenissima	SR	1	City View / Courtyard			X	X	One bedroom + one living room	703	702	2	Parquet	55	596		2 + cot	X





Suite Serenissima



Prestige Deluxe Doge







Prestige Deluxe Matilde di Canossa





Prestige Deluxe degli Artisti







## The dining concept at Hotel Locarno

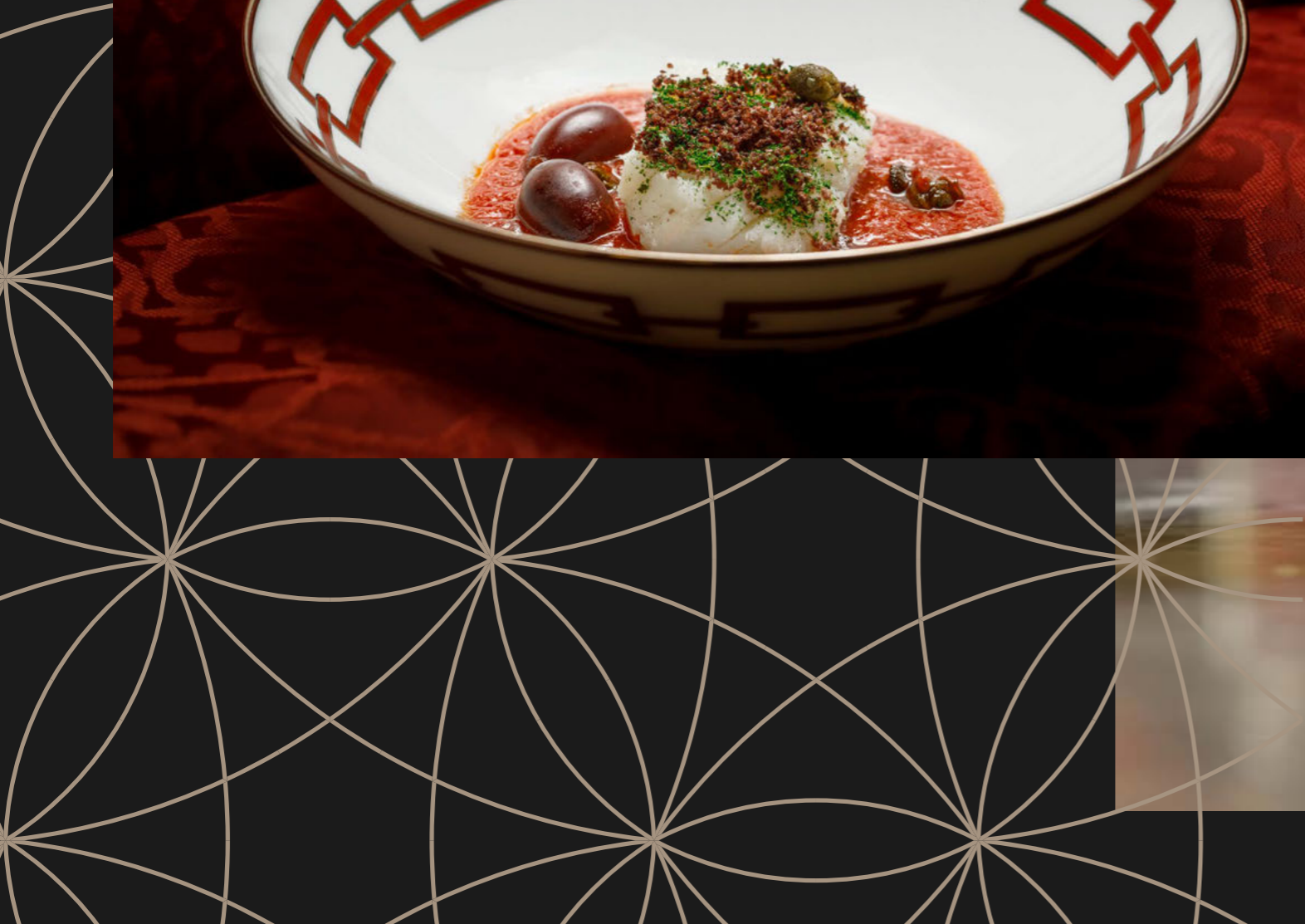
A true culinary journey, a winning synthesis of tradition and innovation: this and more is the Kitchen of the Hotel Locarno. In an atmosphere worthy of a Viennese Literary Cafe of the 1920s, Chef Domenico Smargiassi offers internationally inspired cuisine with a distinct character that is always fresh and authentic.

With a 360-degree menu, featuring everything from the legendary Club Sandwich which seems to come straight from a story by F. Scott Fitzgerald, to the finger food that accompanies the aperitif, to the most coveted local classics, there is something to satisfy every palate.

With so many options, it is natural to run into trouble with the sin of gluttony of which you will be absolved from the start! Bar food but not only, in fact, on the menu you will find an imaginative variety. A passage through time and flavors, the dining concept at Hotel Locarno is an exhilarating experience to enjoy 'anytime-anywhere' throughout the hotel whether in winter, in front of the comforting warmth of the fireplace, or in summer under the fragrant shade of wisteria.











## Bar

The Hotel is also renowned for its evocative and timeless retro Bar, helmed by a team of creative barmen lead by acclaimed mixologist Nicholas Pinna, the beverage concept is inspired by cinema, literature, and the Italian cocktail culture of the 1960s.







# Terrazza Locarno & Bar Locarno





# Terrazza Locarno & Bar Locarno





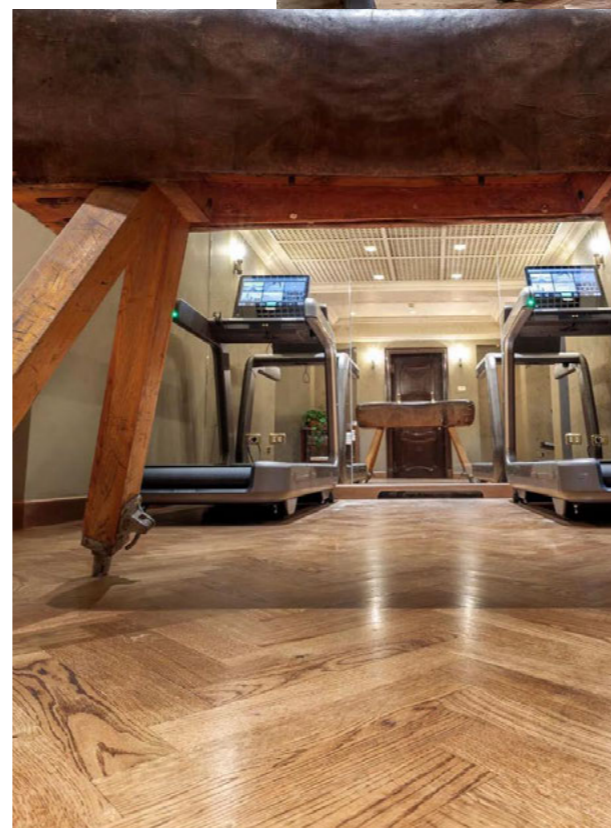
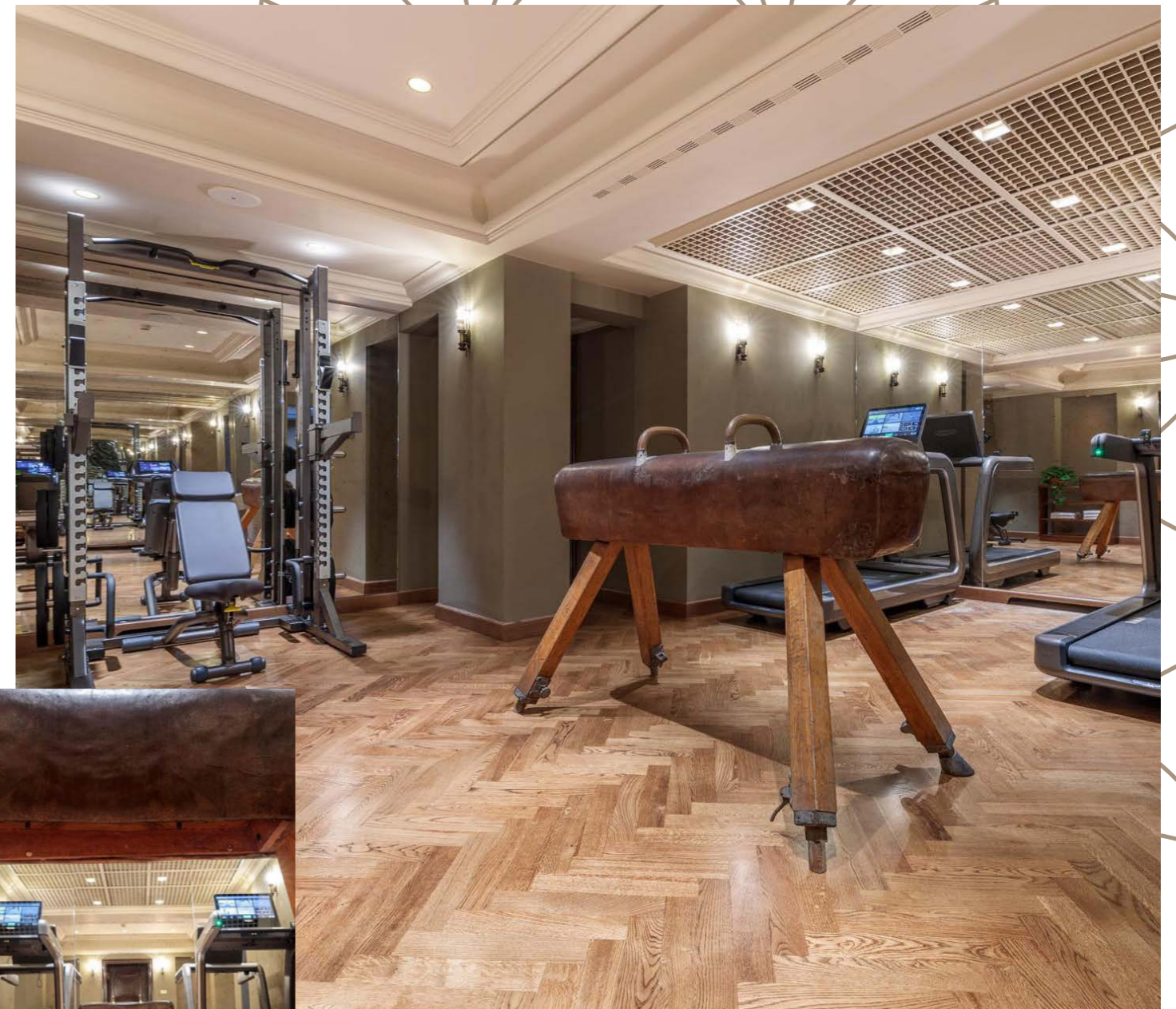
# Locarno Gym

The space features state-of-the-art cardiovascular and strength Technogym Equipment customized in a carbon grey color for Hotel Locarno. In contrast, and in keeping with the hotel's unique spirit, the space also prominently displays an original vintage gym buck.

It includes 2 artis cardio run, artis cardio bike, artis cardio recline, Olympic half rack, fitness adjustable bench.

Personal training sessions are available with expert coaches on request. Wellness services on request.

The Locarno Gym is reserved for hotel guests only 24hrs.





# Hotel venues

Bar Locarno <i>(Courtyard)</i>	100 mq - 60 seats
Terrazza Locarno	250 mq - 70 seats
Sala Camino <i>(Fireplace Lounge)</i>	52 mq - 30 seats
Sala 1925	38 mq - 16 seats
Sala Bellevie	23 mq - 10 seats
Terrazza Canossa	250 mq - 24 seats
<b>Total outside venues</b>	<b>600 mq</b>
<b>Total inside venues</b>	<b>113 mq</b>



Sala Camino  
*(Fireplace Lounge)*



Sala Bellevie



# Thank you!

## HOTEL LOCARNO

Via della Penna 22  
00186, Roma

Phone: +39 06 3610841  
Fax: +39 06 3215249

[www.hotellocarno.com](http://www.hotellocarno.com)  
[reception@hotellocarno.com](mailto:reception@hotellocarno.com)  
[booking@hotellocarno.com](mailto:booking@hotellocarno.com)

Featured on

**50** *Discovery*  
**BEST**



**MICHELIN**  
2024